

# Connecting to a Coraid Etherdrive® appliance via CEC

Coraid Etherdrive appliances are accessible in several ways: a null-modem serial cable with the settings of 9600-8-N-1, KVM or preferably with the Coraid Ethernet Console (cec). CEC is a method for obtaining a console connection to the SR appliance using standard Ethernet frames. CEC is very lightweight and does not include any security or encryption mechanisms.

This document outlines how to install cec on both a Linux and Windows host and connect to a Coraid shelf. **NOTE:** CEC requires a standard Ethernet NIC connected to the storage network in order to function.

## 1. - Linux

### 1.1 - Downloading cec

The latest version of cec can always be found under the “Related Software” section of our [SR Support Page](#), or directly from [Sourceforge](#) where it is hosted.

### 1.2 - Installing cec

The cec client will compile and run on Linux, Solaris, and any BSD variants which support [bpf](#). This example assumes you have a C compiler and make utility installed:

```
user@pluto-desktop:~$ tar -xzf cec-11.tgz
user@pluto-desktop:~/cec-11$ cd cec-11
user@pluto-desktop:~/cec-11$ make
cc -Wall -g -c cec.c
cc -Wall -g -c linux.c
cc -Wall -g -c utils.c
cc -o cec cec.o linux.o utils.o
user@pluto-desktop:~/cec-11$ su
Password:
root@pluto-desktop:/home/user/cec-11# make install
mkdir -p /usr/sbin
cp cec /usr/sbin
+ mkdir -p /usr/share/man/man8
+cp cec.8 /usr/share/man/man8/cec.8
```

### 1.3 - Using cec

The cec client should be run as root or root-equivalent. The command usage for cec is simple:

```
cec [-s shelf] [-m mac] interface
```

*Note that the default shelf address is “-1” if it has not been set by the administrator.*

In this example our shelf number is “5” and the initiator interface connected to the SR is eth0:

```
root@pluto-desktop:# cec -s 5 eth0
Probing for shelves ... shelf 5 found.
connecting ... done.
Escape is Ctrl-\

SR shelf 5>
```

If you would prefer to choose from a list of shelves available on that interface, you can omit the -s option:

```
root@pluto-desktop:# cec eth0
Probing for shelves ... done.
SHELF | EA
5      | 003048786CB6
28     | 003048665850
30     | 003048D3E099
[#qp]: 5
connecting ... done.
Escape is Ctrl-\

SR shelf 5>
```

Once connected, you can execute commands as if connected to the local console. The SR command set can be viewed by entering ‘help’ while detailed command descriptions are found in the SR Software User Manual located on the [SR\[X\] Support page](#).

To exit the cec terminal, press CTRL - \, then q to quit.

#### *Additional Information*

For more information, please reference section 2.6 of the SR Software User Manual found on the [SR\[X\] Support page](#) and/or the man page for cec.

## 2. - Windows

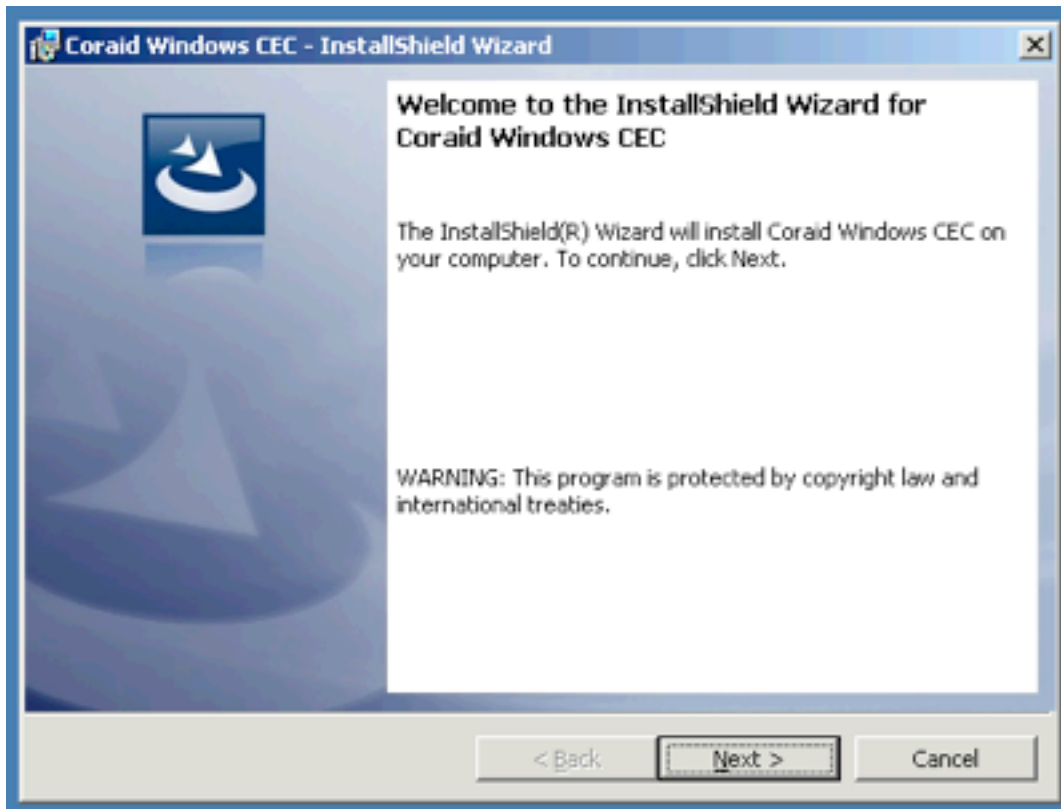
### 2.1 - Downloading cec

The latest version of Windows CEC can be found under the “Related Software” section of our [SR Support Page](#).

### 2.2 - Installing cec

\* Windows CEC requires the Microsoft .NET Framework 4.0 update (may require reboot) and when the installation starts, it will attempt to download/install this update automatically. If for any reason it fails, please download the update manually from Microsoft or use Windows Updates.

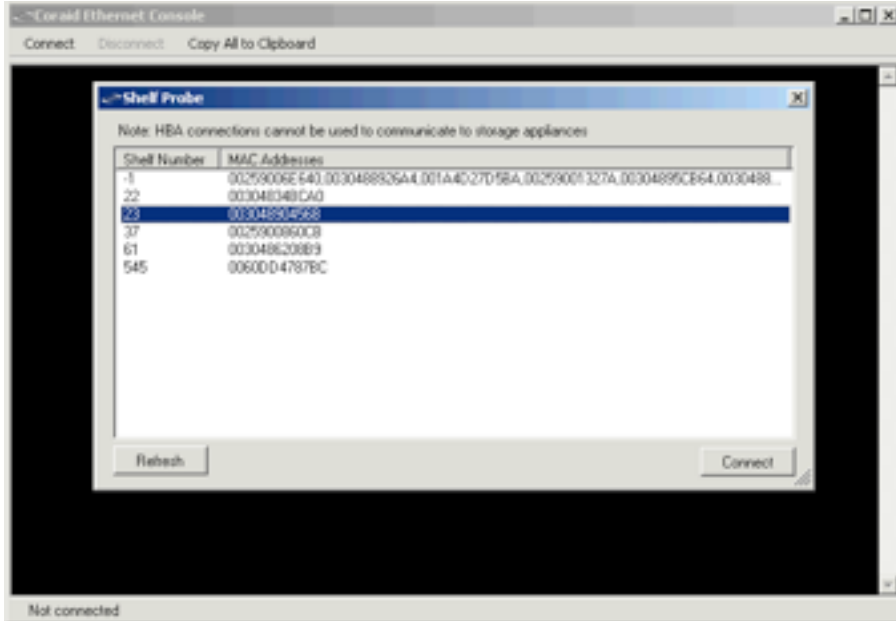
\* The latest version of [WinPcap](#) is also required.



Once the install has finished, you have the option to view a short readme file and it is recommended that you do so for additional details and requirements for Windows CEC.

### 2.3 - Using cec (Start Menu > All Programs > Coraid > Windows CEC)

When the program starts, it automatically opens the 'Shelf Probe' dialog at which point you can connect to whichever shelf number you need.



Once connected, press ENTER and you should be at the prompt for the specified shelf at which point you can execute commands as if connected to the local console. The SR command set can be viewed by entering 'help' while detailed command descriptions are found in the SR Software User Manual located on the [SR\[X\] Support page](#).

